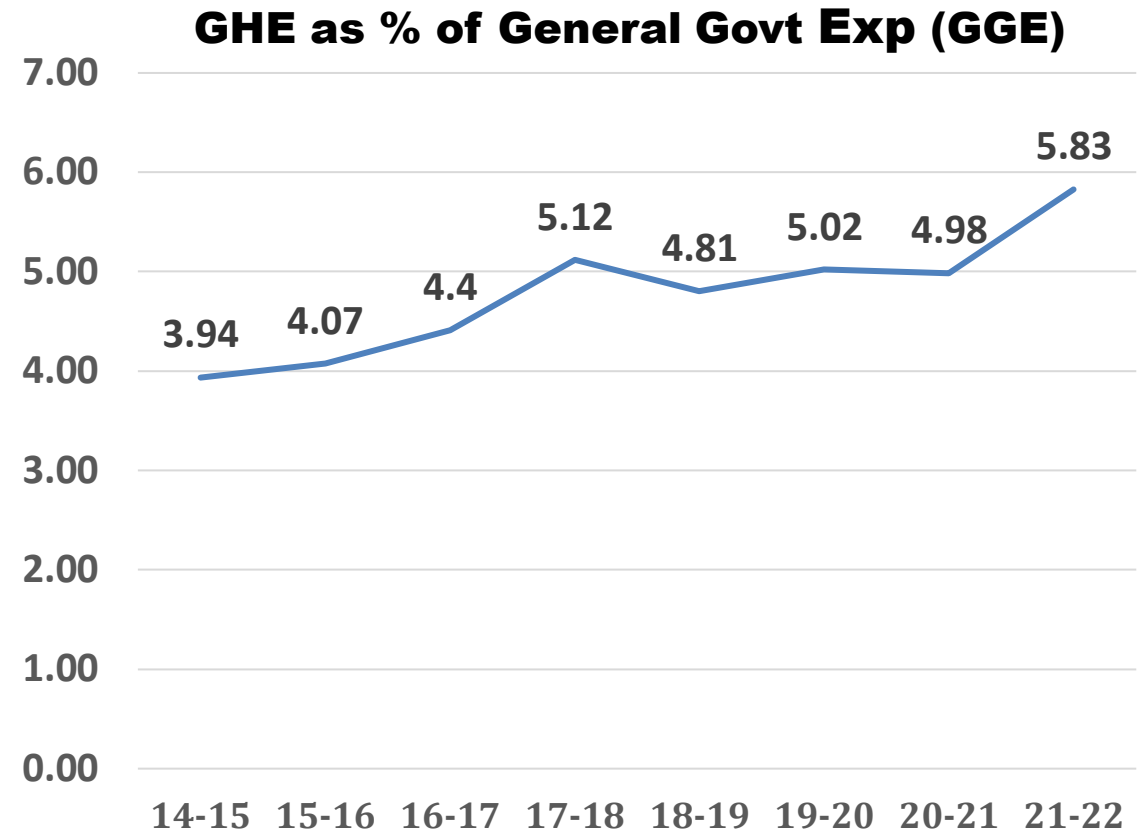
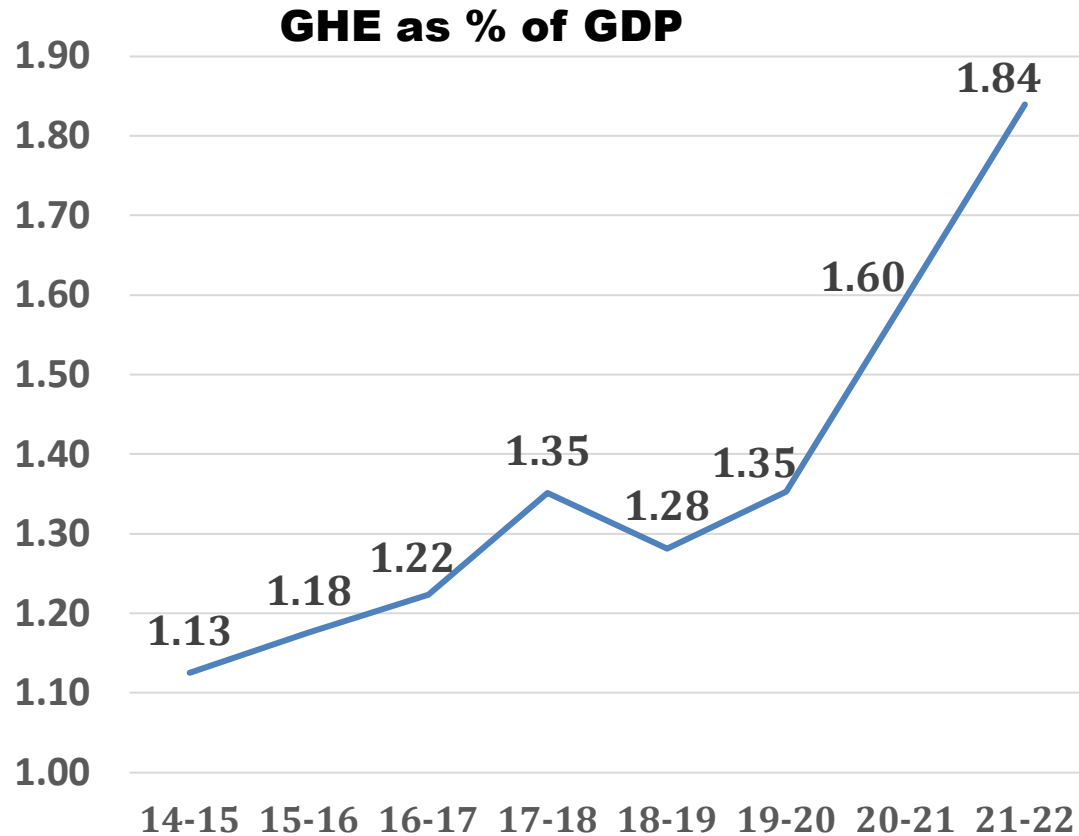




NATIONAL HEALTH ACCOUNTS (NHA) ESTIMATES FOR INDIA



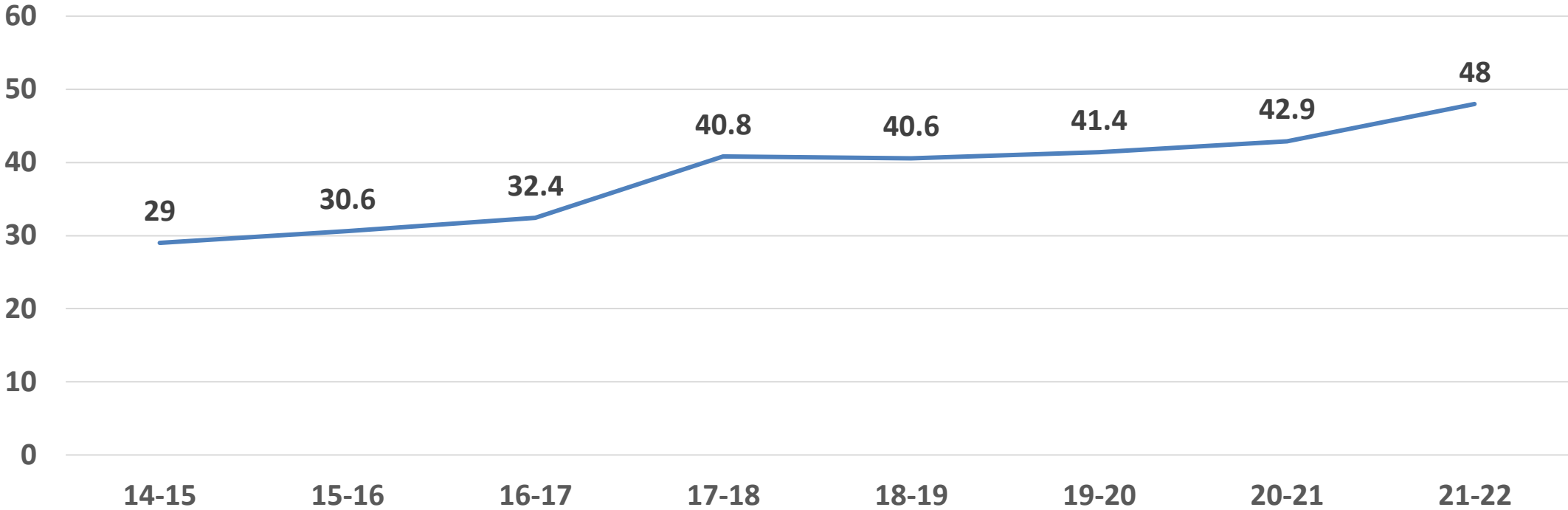
Government Health Expenditure (GHE)



*NHA estimates of 2020-21 and 2021-22 are provisional

Government Health Expenditure (GHE)

GHE as a share of Total Health Expenditure (THE) (%)

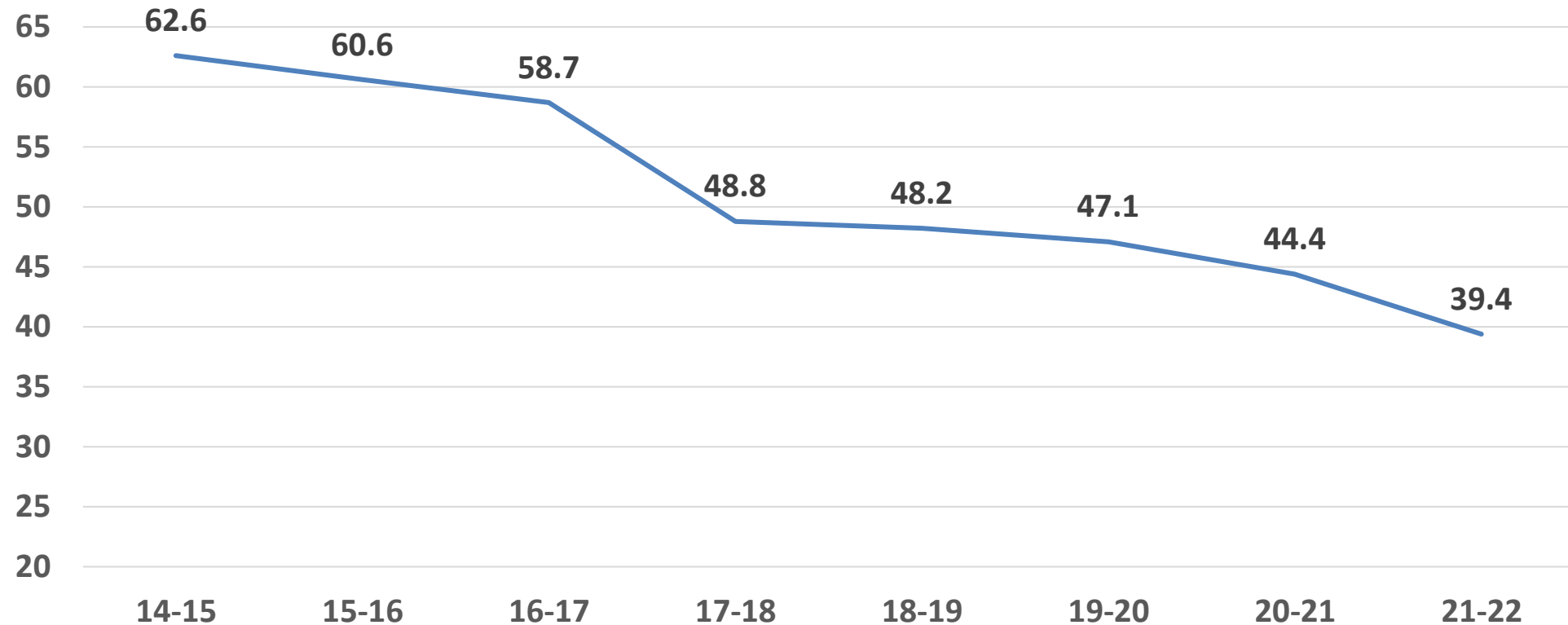


*NHA 2020-21 and NHA 2021-22 estimates are provisional



Out-of-Pocket Expenditure (OOPE)

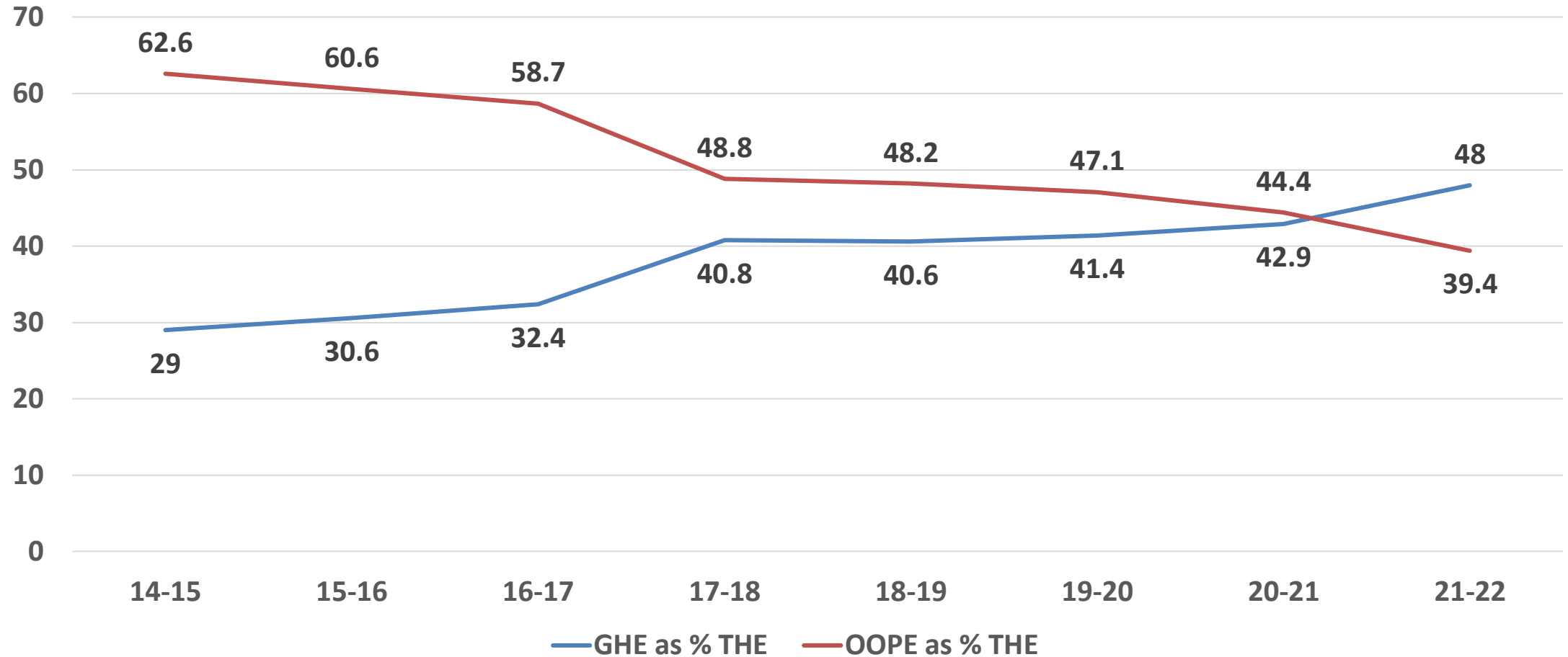
OOPE as a share of Total Health Expenditure (THE) (%)



OOPE as a share of THE by consistently declined over time.

*NHA estimates of 2020-21 and 2021-22 are provisional

GHE and OOPE in THE



*NHA 2020-21 and NHA 2021-22 estimates are provisional

